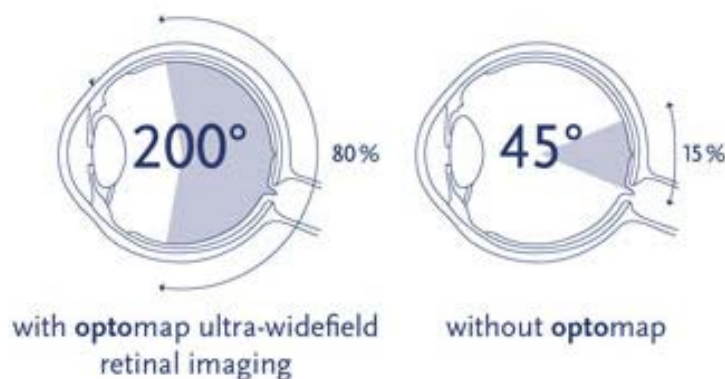
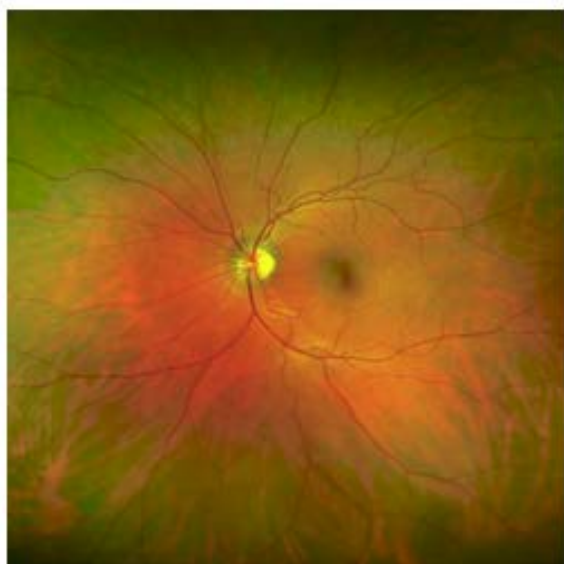




**Early detection means successful treatments can be administered and reduces the risk to your sight and health.**



## Fast & Painless

Getting an **optomap** image is fast, painless and comfortable. Nothing touches your eye at any time. It is suitable for the whole family.

To have the exam, you simply look into the device one eye at a time (like looking through a keyhole) and you will see a comfortable flash of light to let you know the image of your retina has been taken.

## Eliminates Manual Dilation

Under normal circumstances, dilation drops might not be necessary, but your eye care practitioner will decide if your pupils need to be dilated depending on your conditions. The capture takes less than a second. Images are available immediately for review. You can see your own retina. You see exactly what your eye care practitioner sees - even in a 3D animation.

A dilated manual exam would have been quite difficult to perform effectively. With the optomap® Retinal Exam, however, ultra-wide field images are quickly and non-invasively captured, enabling the patient, patient's family and the doctor to interactively review the images

We try to do an optomap® on every patient, every year and in this case, comparing last year's image to this year's image enabled me to pick up the subtle eye diseases.

The ability to capture in one ultra-high resolution image, the total extent of the damage to the retina caused by any condition, is unique to the Optos® imaging platform contained within the P200® C.

## How will optomap® benefit me?

The ultra-wide field optomap® may help your eye doctor detect problems more quickly and easily. Unlike traditional retinal exams, the optomap® image can be saved for future comparisons.

Capture of the 200° field in one image allows for a full diagnosis of retinal disease to be made easily because the progression of the dye across the retinal surface is caught at every stage

Ultra-wide field fluorescent angiography aids in the simultaneous assessment of macular and peripheral retinal circulation in retinovascular condition, allowing us to more precisely classify subtypes of these conditions and guide our therapies.

In our practice it is important that we are able to capture quality images that identify pathology quickly and easily and the P200C has helped us achieve that.

## Helping Children

A patient's mother credits the optomap® Retinal Exam for disc covering the melanoma that may have gone undetected with results that could have been fatal.

Serving the Main Line Ardmore, Radnor, Wynnewood, Bryn Mawr, Villanova,  
Wayne, Rosemont, Strafford, Haverford, Merion Station, Wynnewood,  
Haverford, Gladwyne, Wayne, Devon, Berwyn, Malvern



American Optometric Association

James R. Hall, O.D. - Ardmore Eye Care, 11 West Lancaster Ave., Ardmore, PA 19003 | Phone: 610-276-5725 - Fax: 610-642-2190